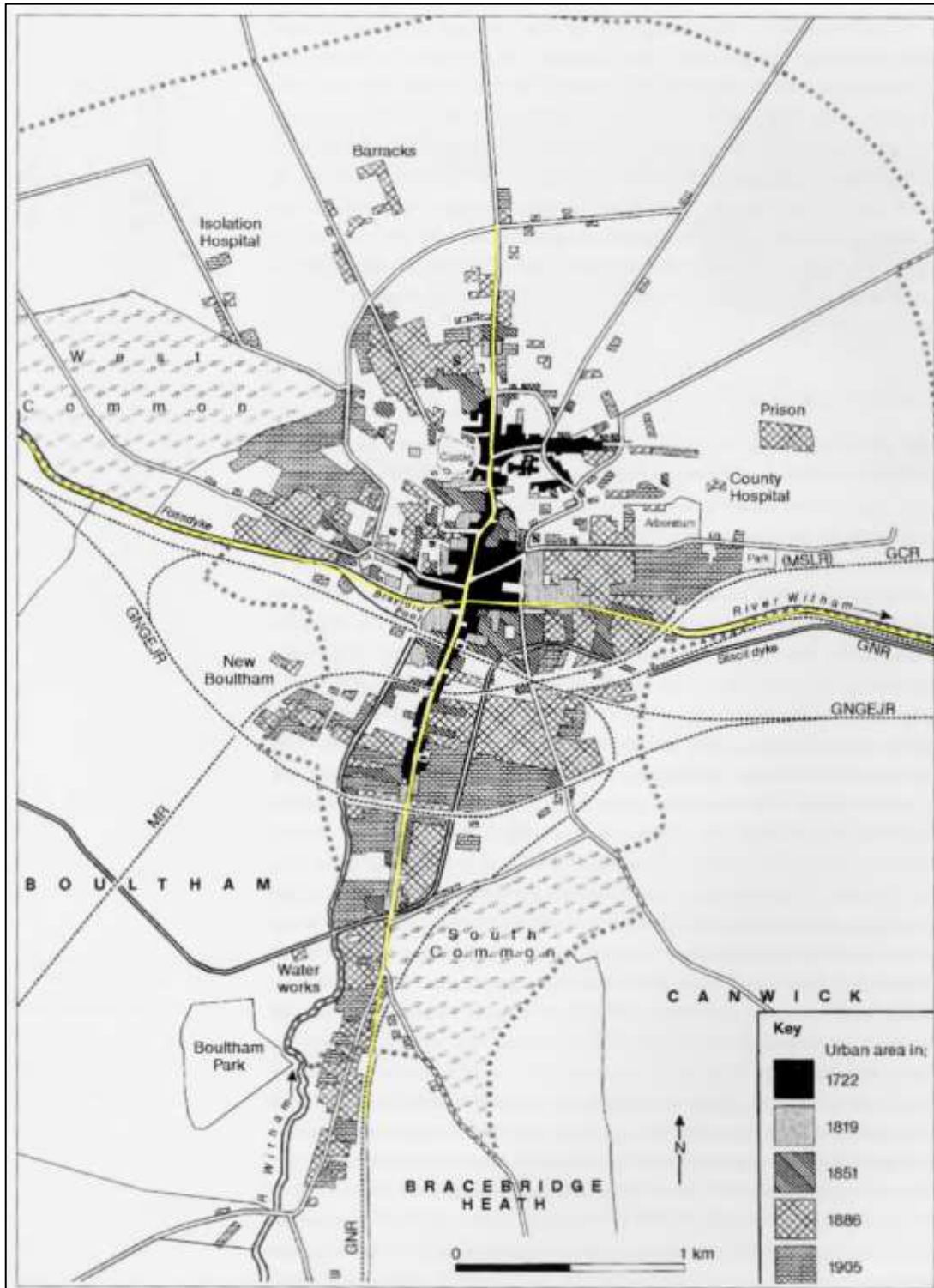


LINCOLN & CYGNUS

Lincoln is a city whose roads and waterways mark out a terrestrial depiction of the constellation Cygnus the celestial swan, as can be clearly seen from this English Heritage Victorian growth map.



LINCOLN & CYGNUS

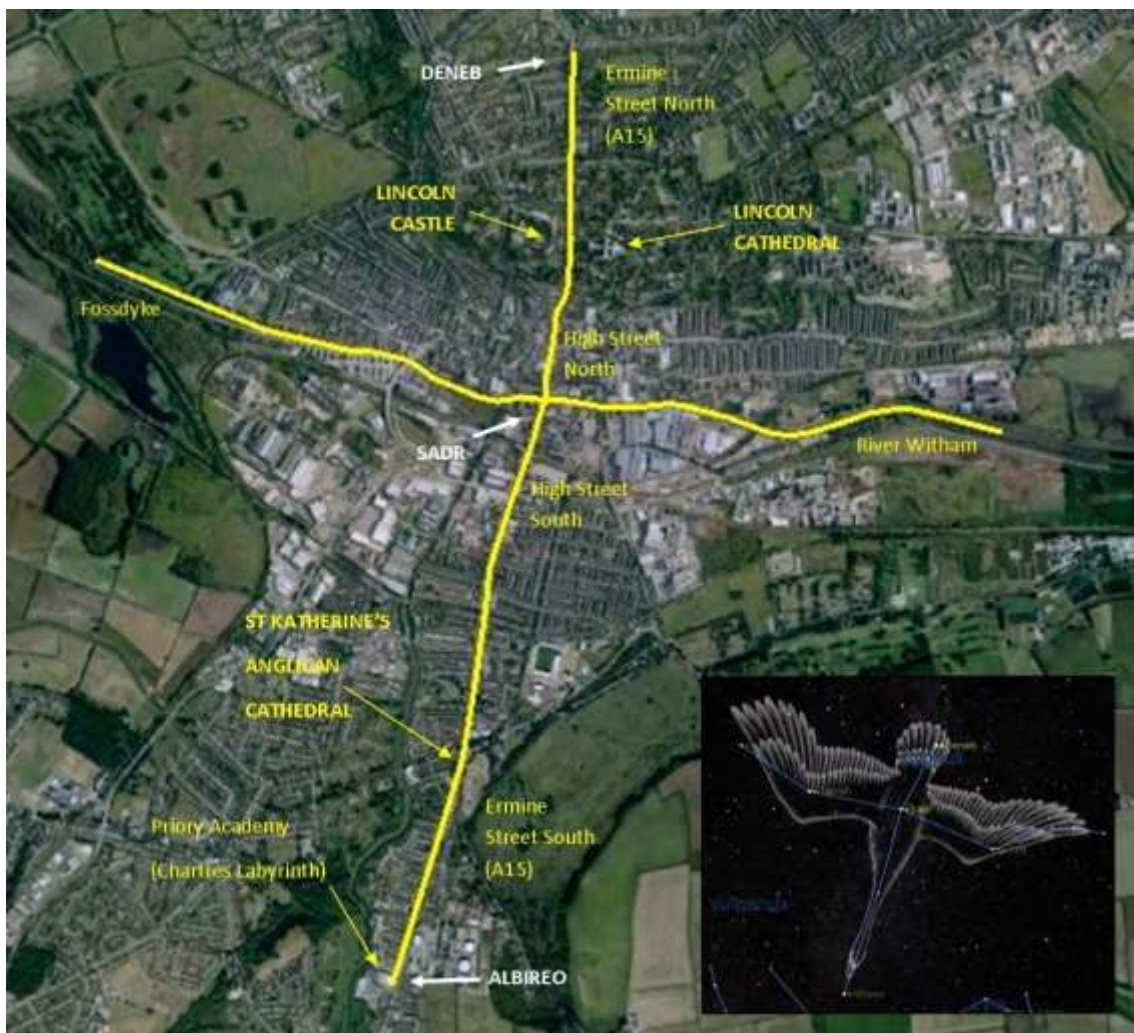
The body of the swan from **Deneb** at the tail in the north to **Albireo** at the head in the south is formed by the ancient highway, adopted by the Romans as **Ermine Street**, which connects London and York, the section through Lincolnshire running almost due north.

The wings of the swan are formed by the **Fossedyke** to the west, which the Romans created to access the River Trent at a point where it too flows due north, and the **River Witham** in the east. Connecting the two is **Brayford Pool**, a favourite haunt Lincoln's population of swans.

The point where the body and wings intersect (the star Sadr) is known as the "Glory Hole" where the River Witham flows under upper High Street.

Lincoln's second Cathedral, the priory church of St Katherine, overseen by an Anglican bishop, lies at the point where the knees would kink were Cygnus viewed as a representation of Christ on the crucifixion cross.

The star Albireo, the head or beak of the swan, is represented by St Katherine's Priory academy in the south where students are encouraged to walk a Chartres style labyrinth.



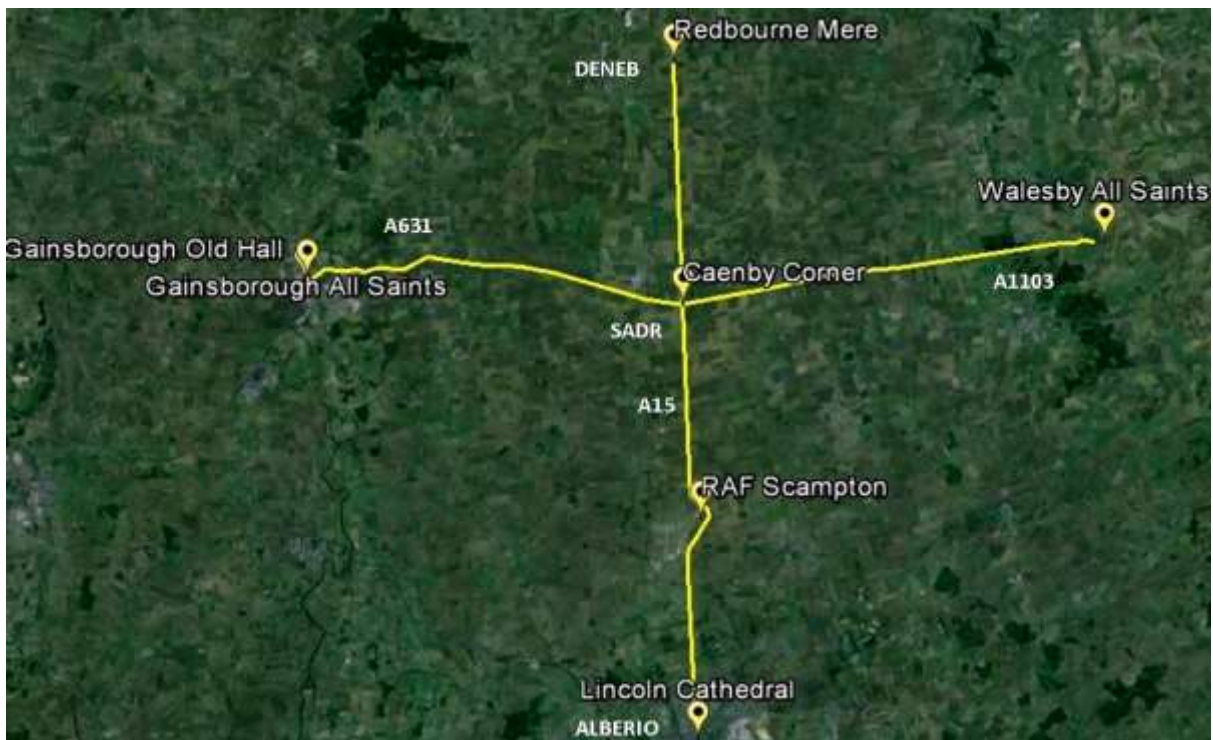
LINCOLN & CYGNUS

Just to ensure we don't fail to notice the entanglement between Lincoln and Cygnus, the collective unconscious has placed yet another terrestrial Cygnus in this landscape, this time with **Lincoln Cathedral** representing the head of the swan and the star **Albireo**.

Once again Ermine Street forms the body of the terrestrial swan kinking around **RAF Scampton** at the point where Christ's knees bend on the crucifixion cross. The tail of the swan and star **Deneb** is represented by **Redbourne Mere**.

The wings are formed by the A631 in the west, with the tip being **Gainsborough All Saints** and the A1103 in the east, with the tip being **Walesby All Saints**.

The body and wings meet at the **Caenby Corner** roundabout representing the star Sadr.



Lincoln Cathedral also sits at the heart of a large regular shaped landscape pentagram whose tip faces true north along Ermine Street and which this second landscape Cygnus sits directly on top of.



LINCOLN & CYGNUS

Cygnus forms part of the celestial **Summer Triangle** along with the constellations of Aquilla and Lyra.

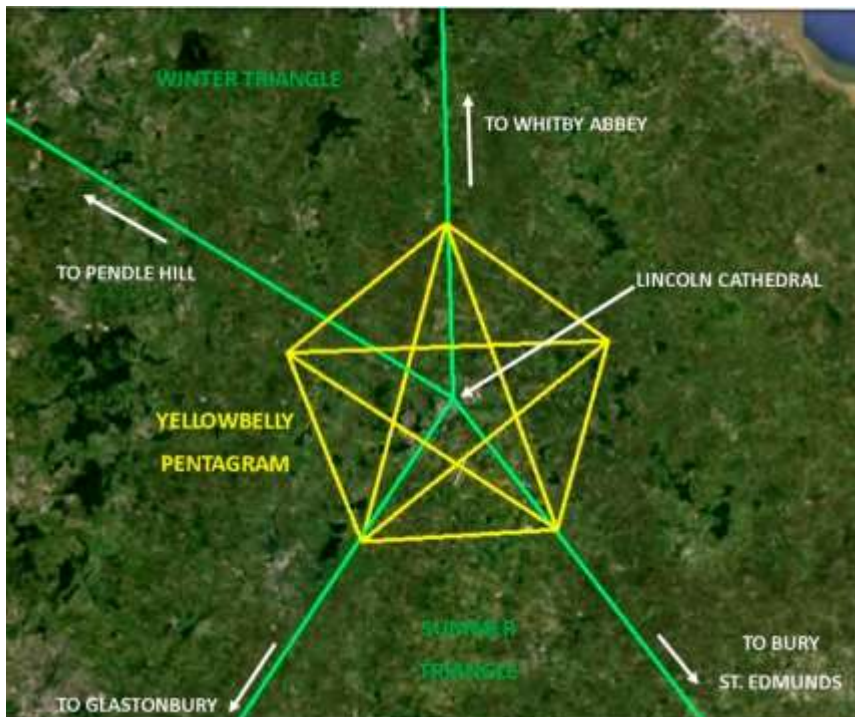
A terrestrial representation of this triangle is formed by connecting Lincoln Cathedral (representing the star Deneb in the constellation Cygnus) with Bury St Edmunds (representing Lyra in Vega) and Pendle Hill (representing Procyon in Canis Minor).



The opposite counterpart of the Summer Triangle is the **Winter Triangle** formed around the constellations of Orion and his hunting dogs which grace the southern winter skies of the northern hemisphere. Its terrestrial counterpart can be formed by connecting Lincoln Cathedral (representing Sirius in Canis Major) with Whitby Abbey (representing Betelgeuse in Orion) and Pendle Hill (representing Procyon in Canis Minor).

As we can see, Lincoln forms the pivot point between these two triangles representing both Deneb, the tail star of Cygnus the swan, and Sirius, the dog star.

As we can see, Lincoln forms the pivot point between these two triangles representing both Deneb, the tail star of Cygnus the swan, and Sirius, the dog star.



Returning to the landscape pentagram centred on Lincoln Cathedral, we can see how its northern tip points to Whitby Abbey, its south-western tip points to Glastonbury and its south-eastern tip points to Bury St Edmunds.

LINCOLN & CYGNUS

Lincoln Cathedral's emblem is the **Swan** which its builder, St. Hugh of Avalon, kept as a pet and is said to have followed him around everywhere.

Dan Green's **Lincoln Cathedral Code** is a Freemasonic style vision quest which begins with a dog on Christ's last supper platter in the stained glass of the East window of the Cathedral and ends at a tombstone which Dan concludes marks the earthly remains of **Mary Magdalene**, murdered by a dagger being thrust into her pregnant belly and later secretly brought to Lincoln by the Templars.

When the single digit alphabet cipher is applied to the word **SWAN** it produces **1515**, which looks very much like **ISIS**, another incarnation of the divine feminine.



Lincoln Cathedral itself has two rose windows opposite one another. The one in the north transept is known as the **Dean's Eye** and is thought to be a giant star clock. Were we able to stand directly under the central tower and see through this window to the sky beyond we would be able to see the constellation Cygnus with the very bright star Deneb and, in the summer months, the celestial triangle which Deneb forms part of.

Opposite the Dean's Eye is the **Bishop's Eye** window in the south transept through which the winter triangle of Orion and his hunting dogs would be visible during the dark winter months. This window also contains a subliminal image of Baphomet with its stained glass.

Lincoln Cathedral is said to be a battle ground between the opposing forces dark and light or good and evil, underlined by the unsuccessful request of a former Dean to have it closed for three months to be exorcised. Perhaps the Bishop's Eye, with its links to Baphomet and Orion, represents the darkness and the Dean's Eye, with its links to Cygnus and the powerful cosmic rays emitted from the micro quasar Cygnus X-3, represents the light.

Sites such as **Gobekli Tepe** and the Egyptian Pyramids have themselves in recent years become battlegrounds between the opposing forces of Cygnus and Orion as researchers have debated which of these constellations these ancient sites are oriented towards and what their purpose was.

Thanks to painstaking research by the likes of Graham Hancock and Andrew Collins, it is now becoming clear that Cygnus appears to have been the object of attention and rock art at Gobekli Tepe suggests depictions of a **comet**, which may be a warning to future generations of coming danger from the skies.

Perhaps Lincoln Cathedral is also oriented to **Cygnus** and within the Cathedral Code we will find more warnings about the second coming of a rocky saviour which will serve to turn back time to when the earth was pure and uncontaminated by the human virus so we can rebuild Atlantis and start all over again.